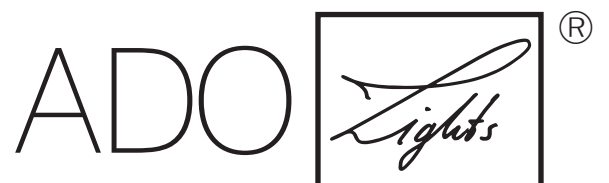


---

# PROJECT

---

Bourscheid Castle  
Hall Lighting  
Bourscheid (LUX)



by TTC Timmler Technology

# HALL LIGHTING BOURSCHEID CASTLE

Bourscheid (Luxembourg)

---

ARCHITECT | LIGHT DESIGNER

Becker, Architecture, Luxembourg | Jean Schmitt Engineering, Luxembourg

---

## Light exactly to the point

Bourscheid Castle is the largest castle complex in Luxembourg and one of the most important castles between the Rhine and the Meuse. Its origins date back to the year 1000, the building was completed around 1430, but fell into disrepair after being abandoned in the 19th century. Today, the castle belongs to the state.

The two buildings that have been reconstructed according to the historical model include the Stolzemberger Haus and the gatehouse. Recently completed with a modern extension in timber construction, it also houses the banqueting hall, which can accommodate up to 120 people for events and celebrations.

LED Luc spotlights in combination with a louvre system on the ceiling ensure optimum illumination. Sockets are embedded every 400–500 mm so that the spots can be repositioned depending on the event.

Thanks to the magnetic base and the fully rotatable ball joint, the light beam of the individual LED Lucs can then be positioned extremely flexibly and precisely and adapted to the respective seating situation.



# HALL LIGHTING BOURSCHEID CASTLE

Bourscheid (Luxembourg)

---

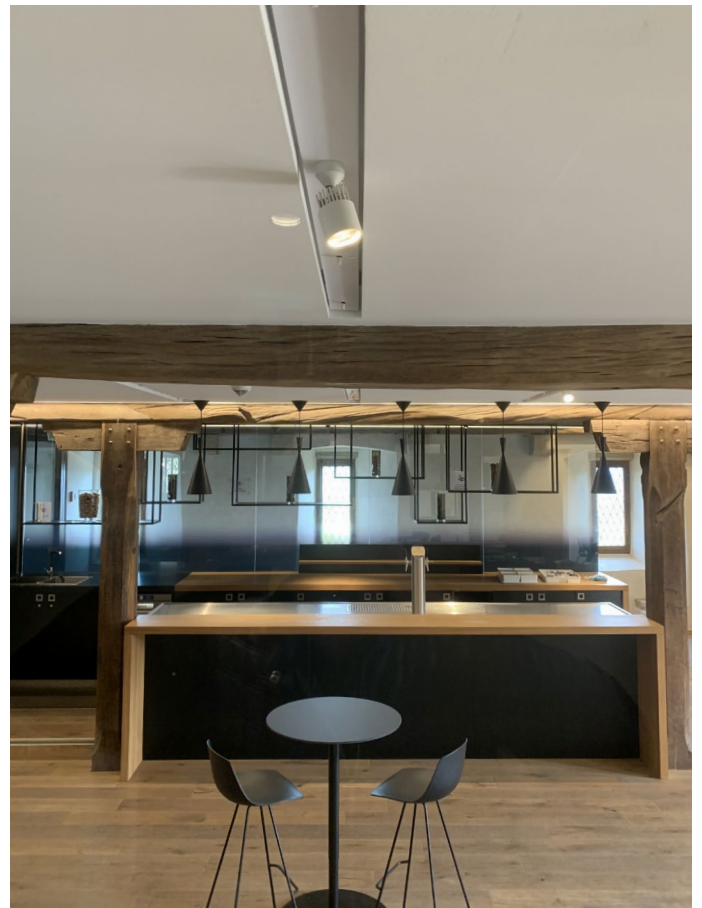
STOLZEMBURGER HAUS

LED-Luc – flexibly repositionable

---

## LED Luc

- 25 LED Luc minispots, 28 x 50 mm (ø x H), made of aluminium powder-coated to RAL 9010, light beam angle 25°/10°, 1–3 W, dimmable, 3000 K, IP 44, attachment with pure white honeycomb louvre, 30 cm connection cable with angled jack plug, magnetic base + magnetic ball joint
- 50 LED Luc L60 spots, 60 x 100 mm (ø x H), made of aluminium powder-coated to RAL 9010, light beam angle 25°/45°/60°, 6 W, dimmable, 3000 K, IP 44, attachment with pure white honeycomb louvre, 30 cm connection cable with angled jack plug, magnetic base + magnetic ball joint
- 54 mounting slats in various lengths, 1350/2800/3000/3600 x 100 mm (L x W), 2 mm steel, powder-coated to RAL 9010, equipped with jack sockets for flexible plug-in of LED Lucs, pre-assembled with power supply unit





# HALL LIGHTING

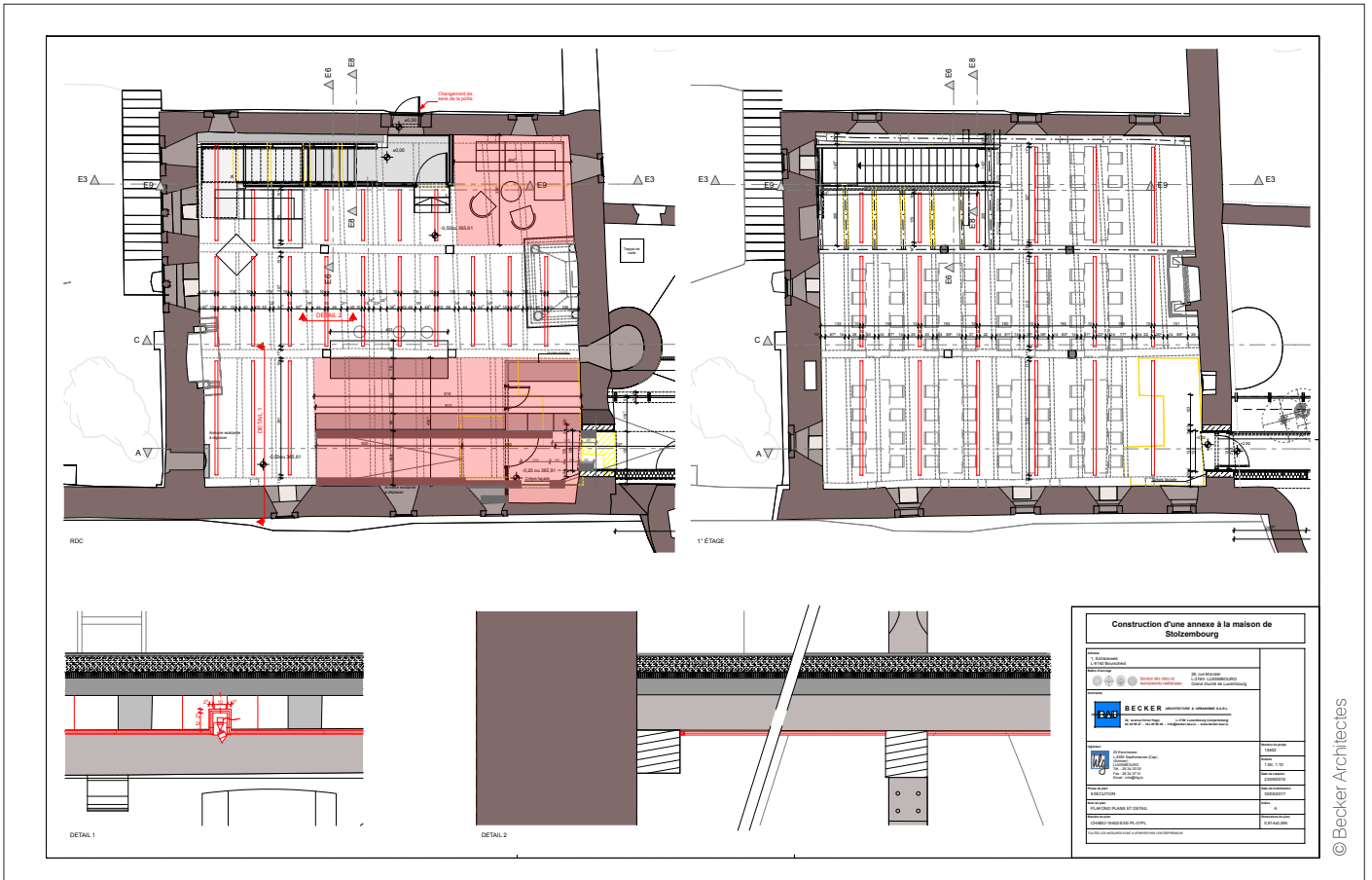
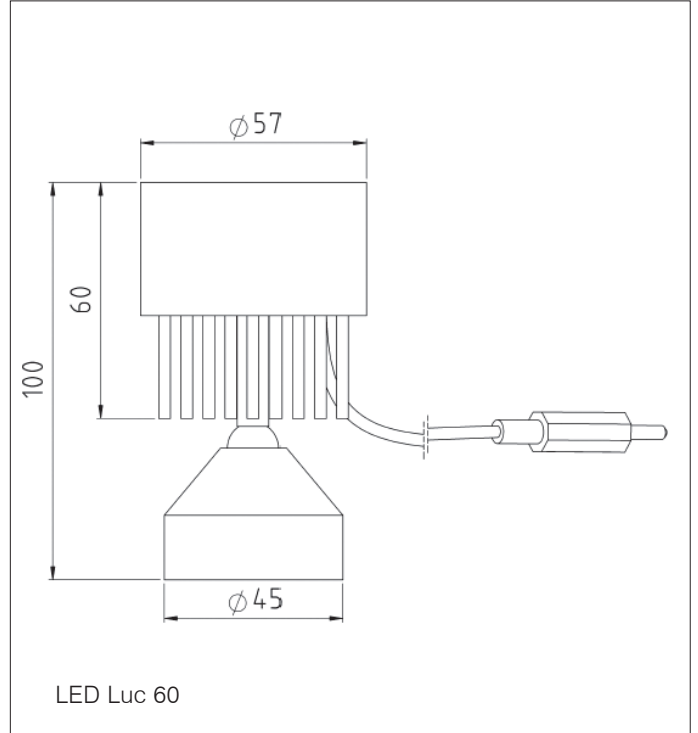
## BOURSCHEID CASTLE

### Bourscheid (Luxembourg)



LED LUC – FLEXIBLE REPOSITIONABLE

Technical drawings



© Becker Architectes

© Product picture/drawing: TTC Timmier Technology; Plan drawing: Becker Architectes

# HALL LIGHTING

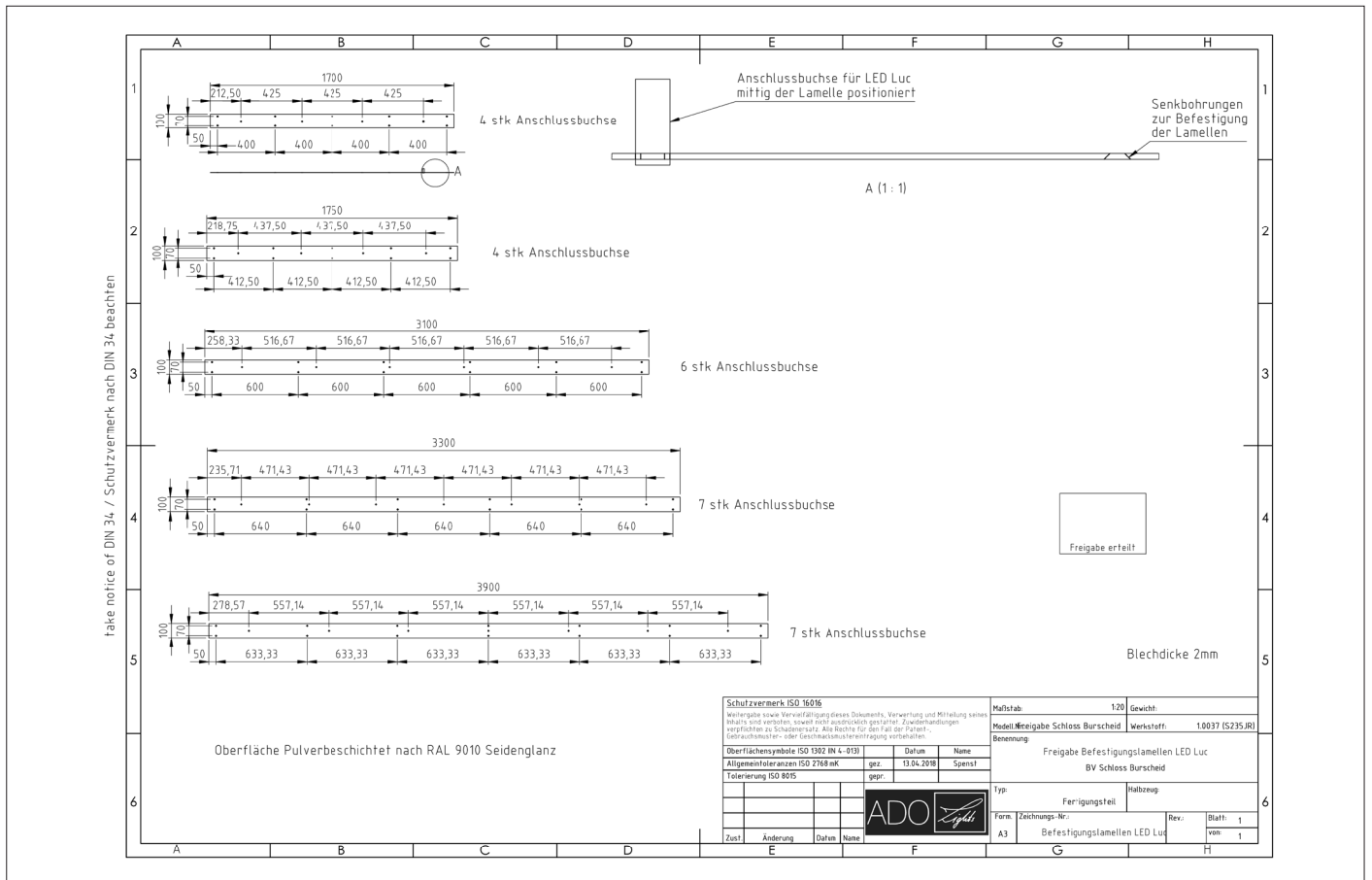
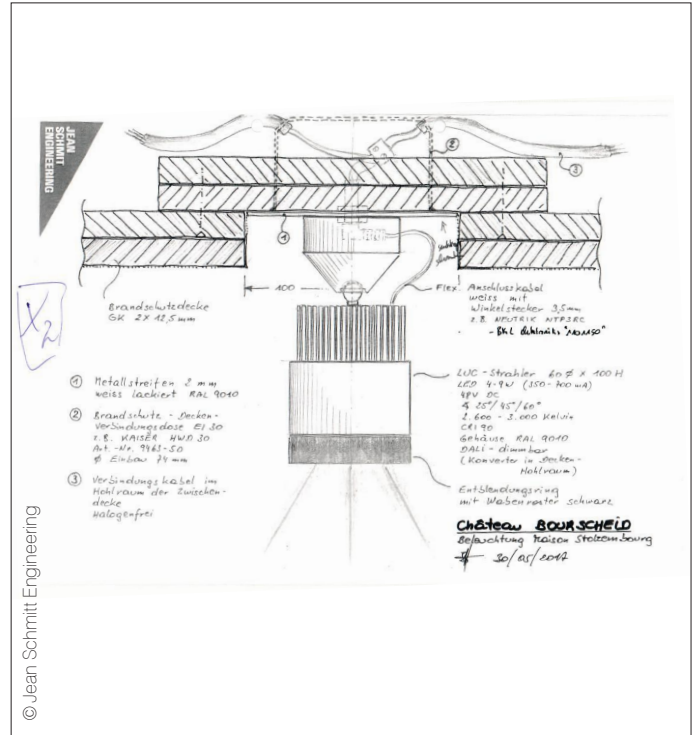
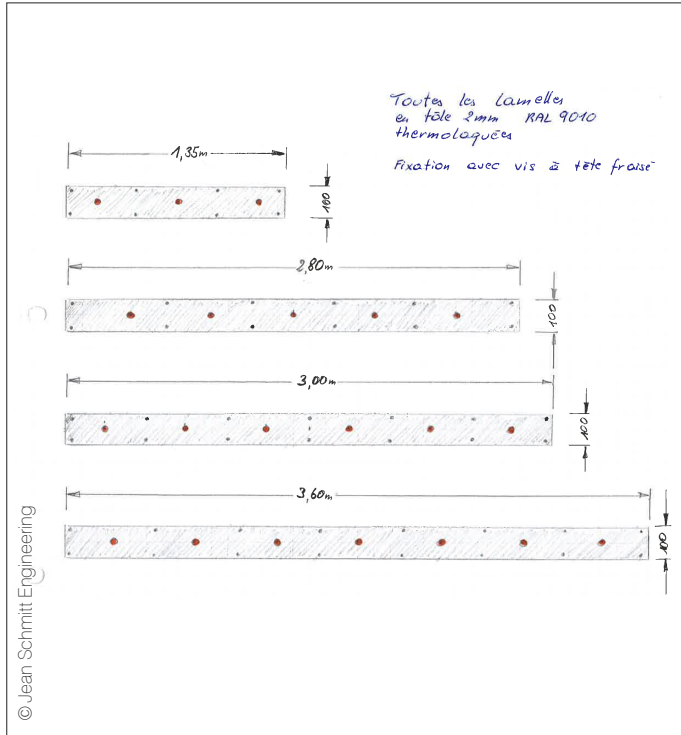
## BOURSCHEID CASTLE

### Bourscheid (Luxembourg)



FIXING LOUVRES WITH FLEXIBLE REPOSITIONABLE LED LUC SPOTS

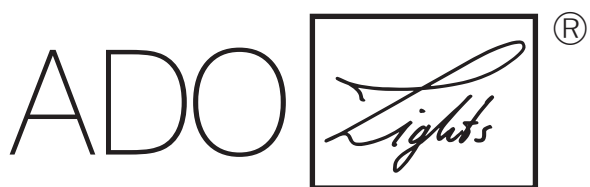
Technical drawings



©Drawings: TTC Trimmer Technology, Jean Schmitt Engineering

Schutzvermerk ISO 16016		Mafstab 1:20		Gewicht	
Weitergabe sowie Vervielfältigung dieses Dokuments, Verwertung und Mitteilung seines Inhalts sind verboten, soweit nicht ausdrücklich gestattet. Zuwiderhandlungen verpflichten zu Schadensersatz. Alle Rechte für den Fall der Patent-, Urheberrechts- oder Geschmacksverletzung vorbehalten.					
Allgemeintoleranzen ISO 2768 mK		gez.	13.01.2018	Spensl	
Tolerierung ISO 8075		gepr.			
Oberflächensymbole ISO 1302 (IN 4-013)		Name			
Freigabe Befestigungslamellen LED Luc		BV Schloss Bourscheid			
Typ		Halbzeug			
Form		Fertigungsteil			
Zust.		Änderung		Datum	
Name		Name			
Spensl		Name			
Form		Zeichnungs-Nr.		Rev.	
A3		Befestigungslamellen LED Luc		Blatt 1	
				von 1	

TTC Timmler Technology GmbH  
Christian-Schäfer-Straße 8  
D-53881 Flammersheim [Cologne/Bonn]  
T +49 2255 9212-00  
F +49 2255 9212-99  
E [info@ado-lights.com](mailto:info@ado-lights.com)  
I [www.ado-lights.com](http://www.ado-lights.com)  
[www.led-luc.com](http://www.led-luc.com)



by TTC Timmler Technology

