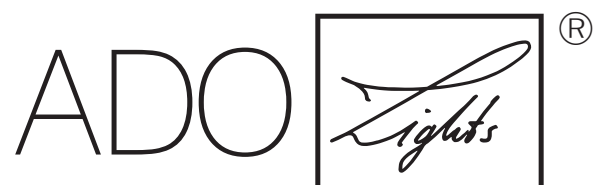


.....

PROJECT

.....

Danish Jewish Museum
Copenhagen



by TTC Timmler Technology

DANISH JEWISH MUSEUM Copenhagen

ARCHITECTS

Daniel Libeskind, New York | Bertelsen & Scheving Arkitekter, Copenhagen

Light welcome

The Danish Jewish Museum in Copenhagen is located in the historic old building of the former Royal Library on Slotsholmen, an island in the centre of Copenhagen. The museum, designed by Daniel Libeskind, was opened in 2004. Historically preserved on the outside, the interior – similar to the Jewish Museum in Berlin – is a kind of a labyrinth.

In 2022, a modern entrance area was added to the exterior of the building, so that visitors can now enter the museum through the so-called »Library Garden«.

In order to not destroy the sculptural character of the entrance building, the lighting was unceremoniously sunk into the ground. Eight LED light lines were flush-mounted to match the architecture and supplemented with recessed floor spotlights for accentuation.

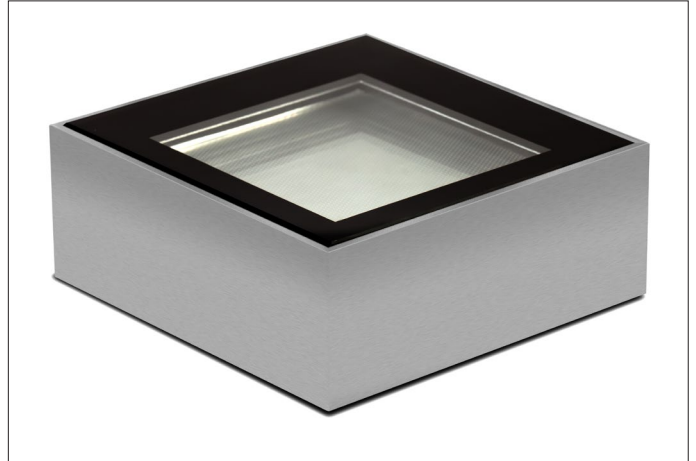


LED-GROUND LEVEL SPOTS

Picture, technical drawing + product information

LED-Ground Level Spots

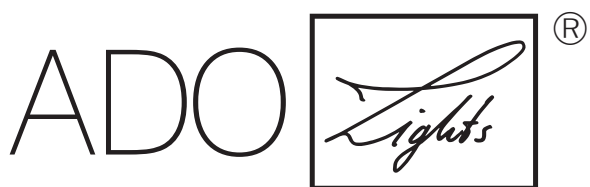
- 2 LED-Ground Level Spots
150 x 150 x 120 mm [LxWxH], stainless steel housing for flush recessed mounting, IP67, LED White, 3000 K, asymmetric mikropismatic optic for glare-free light output, DALI dimmable
- 1 LED-Ground Level Spot HL-15 VA
150 x 150 x 120 mm [LxWxH], stainless steel housing for flush recessed mounting, IP67, LED White, 3000 K, 15° light beam angle, adjustable beam direction, DALI dimmable



Fake notice of DIN 34 / Schutzvermerk nach DIN 34 beachten

Schutzvermerk ISO 9016 Weitergabe sowie Vervielfältigung dieses Dokuments, Verwertung und Mitteilung seines Inhalts sind verboten, soweit nicht ausdrücklich gegenteilig festgelegt ist. Verpflichtung zur Schadensersatz. Alle Rechte für den Fall der Patent-, Urheberrechts- oder Geschmacksverletzung vorbehalten.				Maßstab: 1:2	Gewicht: kg
Oberflächensymbole ISO 1502 (IN 4-813)				Modell-Nr.:	Werkstoff:
Allgemeintoleranzen ISO 2768 mS				Benennung: Ado -Lights ground level spot 150x150x120	
Tolerierung ISO 8815				Typ:	Halbzeug:
Zust. Änderung Datum Name				Form. Zeichnungs-Nr.:	Rev. Blatt: 1 von 1

TTC Timmler Technology GmbH
Christian-Schäfer-Straße 8
D-53881 Flammersheim [Cologne/Bonn]
T +49 2255 9212-00
F +49 2255 9212-99
E info@ado-lights.com
I www.ado-lights.com
www.led-luc.com



by TTC Timmler Technology

