

---

# PROJECT

---

Library  
Gersdorff Barracks  
Euskirchen

# LIBRARY

## Gersdorff Barracks

### Euskirchen

---



ARCHITECT | LIGHT PLANNER

nbp architekten, Roetgen | ZWP Ingenieur-AG, Cologne

---

### Well equipped

The Generalmajor Freiherr von Gersdorff Barracks in Euskirchen are home to both the Centre for Cyber Security and the Centre for Software Competence of the German Bundeswehr. Due to the increasing importance of the topic of IT, the location was generously expanded with foresight and so, in addition to various lecture room and accommodation buildings, a new library with a large reading room for preparation for the courses was also built.

The curtain slats in the upper part of the new building serve as sun protection, offer views in and out, but they can also be illuminated by wallwashers in different colours, so that the façade becomes a real eye-catcher in the dark.

Inside the library, the focus of the lighting is on good lighting conditions to ensure a high quality of stay during prolonged and concentrated reading and working. The luminaires should therefore be inviting and above all glare-free – an ideal application for the LED-Linargo, which was installed here as a recessed and pendant luminaire. On the one hand, shelves are optimally illuminated from top to bottom; in reading areas, they serve as pleasant ambient lighting.

Perfect illumination of a geological model hanging in the entrance area respectively above the staircase is provided by the fully swivelling LED Luc Minispots, placed on a rail.



# LIBRARY

## Gersdorff Barracks

### Euskirchen

---

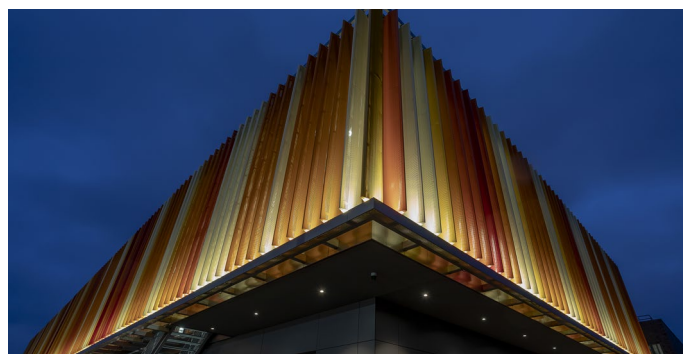
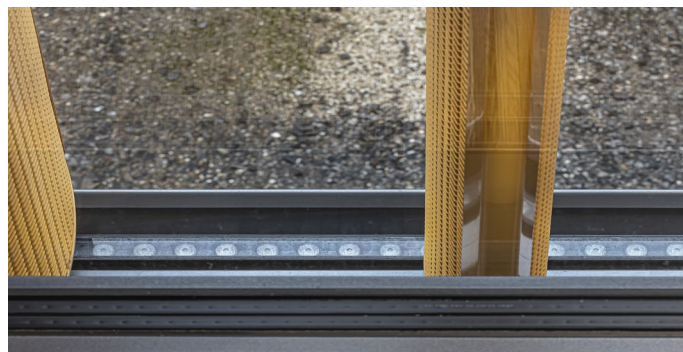
#### FAÇADE

Wallwasher

---

#### WallWasher

- 158 units WallWashers type 1000.24 RGB+W3000K
- 1000 x 44 x 97 mm [L x W x H]  
aluminium profile black powder-coated,  
cover PMMA clear
- RGB + White 3000 K, beam angle elliptical 10°/60°,  
30 W/m, 24 VDC, IP66, protection class III, DMX512,  
including power supply





# LIBRARY

Gersdorff Barracks

Euskirchen



GROUND FLOOR + UPPER FLOOR

LED-Linargo + LED-Luc

## LED-Linargo 3000 | Recessed luminaire

- 85 metre recessed luminaire LED-Linargo 3000
- 3000 x 60 x 27 mm [L x W x H], aluminium housing powder-coated according to RAL, PMMA cover, including butt connector for strip arrangement
- 4000 K, 143 lm, 31 W, CRI > 85, narrow colour tolerance MacAdam Step 3, DALI dimmable, UGR < 19, L65 < 1500 cd/m<sup>2</sup> according to EN 12464-1:2011, IP40, including power supply

## LED-Luc 60-1 | Spot

- 8 units LED-Luc Spots 60-1 installed in combination with LED-Linargo recessed luminaire
- Aluminium housing powder-coated according to RAL, magnetic ball joint, fully swivelling and rotatable
- 4000 K, 30° reflector, max. 9 W, CC 250 mA, DALI dimmable, including power supply



# LIBRARY

## Gersdorff Barracks

### Euskirchen

---

GROUND + UPPER FLOOR

LED-Linargo pendant luminaire

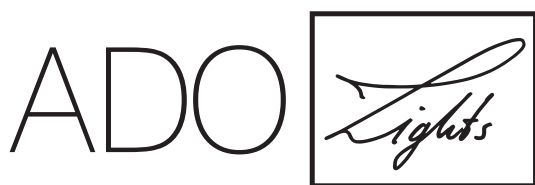
---

#### LED-Linargo 3000 | Pendant luminaire

- 39 units pendant luminaires LED-Linargo
- 6 different special lengths from 1972 to 6902 mm, 80 x 38 mm [W x H], aluminium housing powder-coated according to RAL, PMMA cover, including wire suspension and transparent supply cable
- 4000 K, beam angle 120°, 167 lm/W, max. 31 W direct/35 W indirect, CRI > 80, DALI dimmable, IP40



TTC Timmler Technology GmbH  
Christian-Schäfer-Straße 8  
D-53881 Flammersheim [Cologne/Bonn]  
T +49 2255 9212-00  
F +49 2255 9212-99  
E [info@ado-lights.com](mailto:info@ado-lights.com)  
I [www.ado-lights.com](http://www.ado-lights.com)  
[www.led-luc.com](http://www.led-luc.com)



by TTC Timmler Technology

