



LED-LUC

LED-Luc MiniSpot
LED-Luc 60



LED-LUC

Magnetic MiniSpot

BASE INFORMATION



LED-Luc | Thumb-sized + to the point

Switch on the Spot! LED-Luc is small but powerful. To the point or for spacious illumination, as desired. In addition, it can be pivoted and it is magnetic on the reverse side. Another positive aspect: LED Luc generates very little heat. And the luminaire provides excellent colour reproduction.

LED Luc is an electrifying product. Just thumb-sized but still extremely powerful. There is no UV luminance, which is cool. In addition, it can be pivoted and magnetically attached. A miniature spot for maximum demands.

Features

- High flexibility due to a multitude of application options and individual adjustability
- Magnetic base
- For private residences, showrooms, churches, castles, museums, trade fairs, libraries, galleries
- To gently illuminate paintings, works of art, exhibits
- No UV components
- Low heat/thermal load, hence, only very little air-conditioning
- Excellent CRI [CRI > 90]
- Lenses subsequently changeable



LED-LUC

St. Petri Church, Dortmund

ARCHITECT | LIGHT PLANNING

Pfeiffer Ellermann Preckel, Lüdinghausen

Licht Kunst Licht AG, Bonn/Berlin, Luc Bernard

Task

Illuminating the 500 years old Antwerp High Altar.

To appropriately air-condition the restored altar, an area had been closed off by installing a filigree and at the same time transparent steel/glass construction about four metres from the altar.

It was the task to homogeneously illuminate the altar, measuring five by three metres, while the luminaires and the associated technology had to remain invisible.

Solution

150 LED-Luc mini spots were installed and cabled within the steel profile, invisible to the observer.

This solution guarantees a state-of-the-art illumination of this rare work of art while being energy efficient at the same time.



LED-LUC

Paulas Shop,
Hückelhoven

SALESROOMS
Flexible illumination



LED-LUC

Hohenschwangau Castle, Bavaria

CLIENT | LIGHT PLANNING

Wittelsbacher Ausgleichsfonds, Munich | Licht Kunst Licht AG, Bonn/Berlin



© Wittelsbacher Ausgleichsfonds München, Photographer Peter von Pigage

LED-LUC

Hohenschwangau Castle,
Bavaria

EXHIBITION SPACES

Illumination integrated in traverses



LED-LUC

MuCEM, Musée des civilisations de l'Europe et de la Méditerranée
Marseille

.....

ARCHITECT | CLIENT/LIGHT PLANNING

R. Ricciotti et R. Carta architectes, F-Bandol | Licht Kunst Licht AG, Bonn

.....



LED-LUC

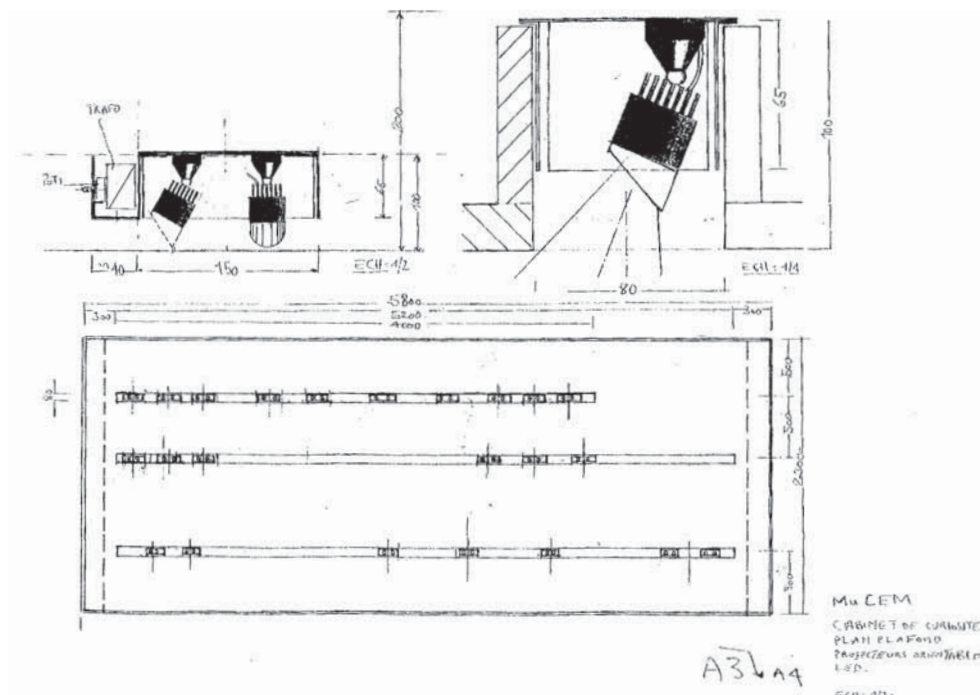
MuCEM, Musée des civilisations de l'Europe et de la Méditerranée
Marseille

.....

EXHIBITION SPACES | SHOWCASES

Flexible illumination of exhibits

.....



LED-LUC

Richard-Wagner-Museum,
Bayreuth

ARCHITECT | LIGHT PLANNER

Staab Architekten, Berlin | Licht Kunst Licht AG, Bonn

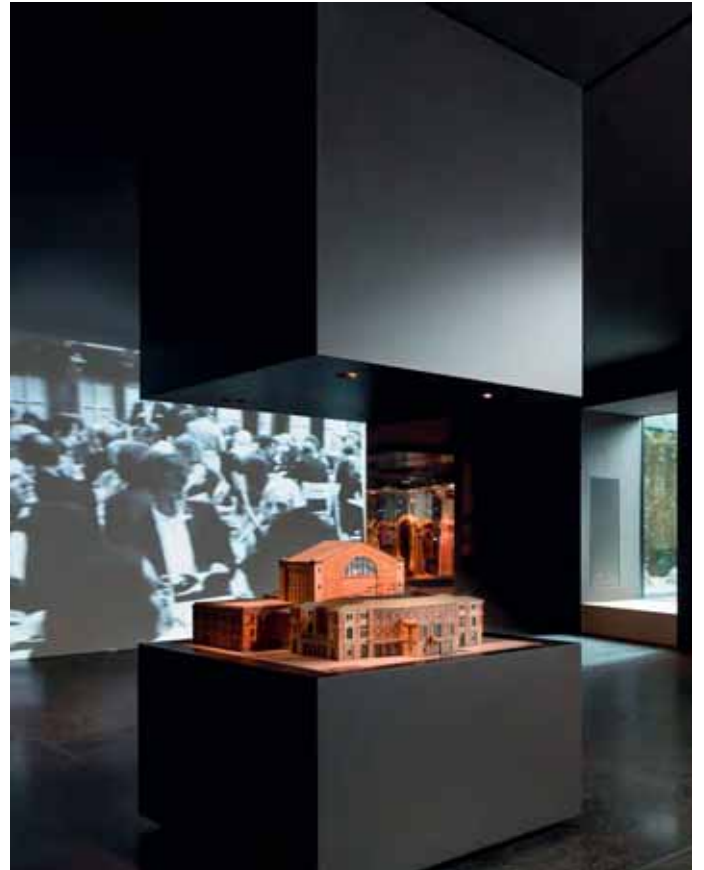


LED-LUC

Richard-Wagner-Museum,
Bayreuth

EXHIBITION SPACES | SHOWCASES

Flexible illumination of exhibits



LED-LUC

Richard-Wagner-Museum, Bayreuth

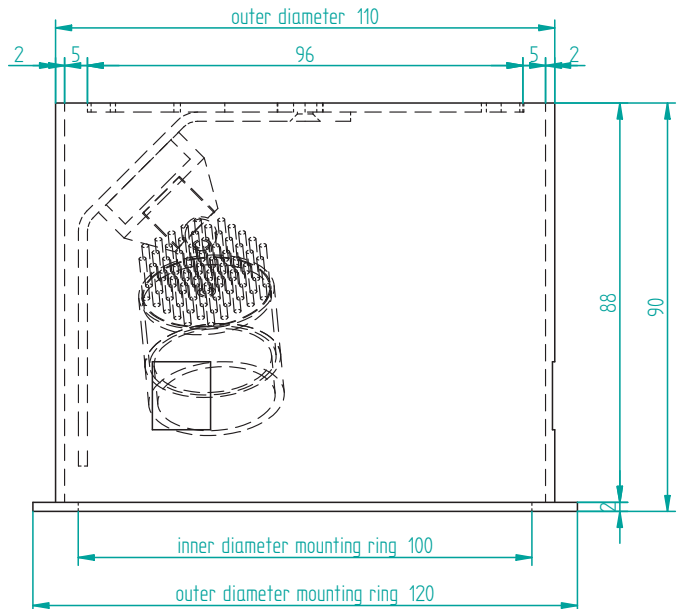
IN-CEILING HOUSING

with integrated, rotatable supporting arm for flexible positioning

Round in-ceiling housing

For Richard-Wagner-Museum ADO Lights created – suitable to the LED-Luc MiniSpots – round in-ceiling housings with an integrated, rotatable supporting arm which allows the flexible positioning of the MiniSpots.

The housing is made of steel ST37 and black or white powder-coated according to RAL.

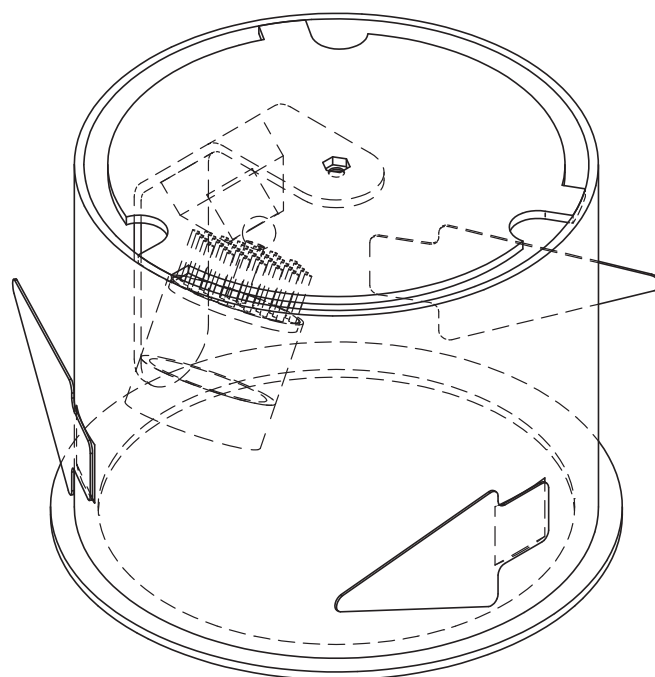
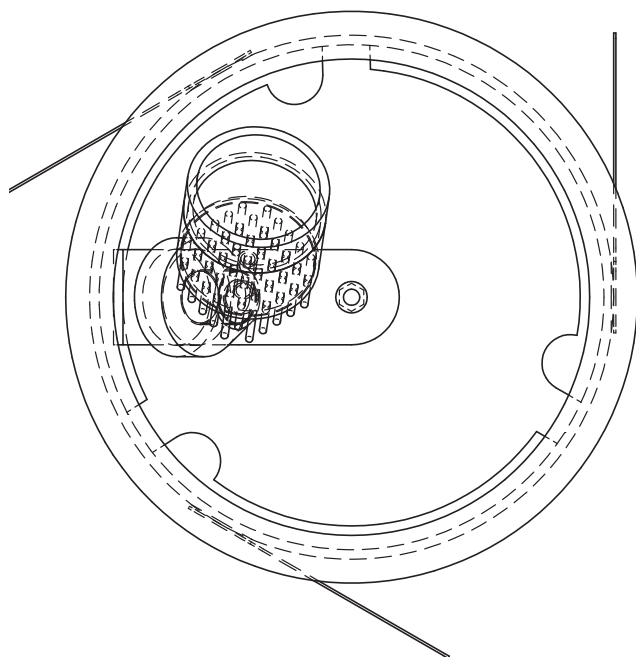


LED-LUC

Richard-Wagner-Museum,
Bayreuth

TECHNICAL SPECIFICATIONS

General technical specifications see page 23



LED-LUC

Cabinet House – Mobile Living

Presentation on IMM Cologne 2016

DESIGNER

Fachhochschule Potsdam, Faculty Design, Prof. Hermann Weizenegger, BA-Des. Franz Dietrich, Potsdam



LED-LUC

Cabinet House – Mobile Living Presentation on IMM Cologne 2016

LIVING | KITCHEN | BATHROOM

Flexible illumination with mini spots on ceiling track and ceiling panel



LED-LUC

Showroom Lampertz Stone Designer,
Luxembourg

.....

ARCHITECT
frei(Raum)architekten, Luxembourg

LETTERING | SHOWCASES
Planar illumination

.....



LED-LUC

Magnetic MiniSpot

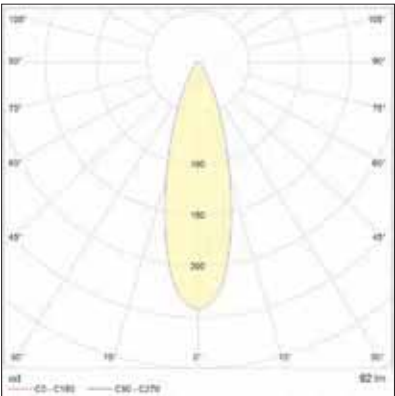
GENERAL TECHNICAL SPECIFICATIONS



DIMENSIONS [W X H]	28 x 50 mm	IP RATING	IP44
POWER CONSUMPTION	1–3 W	CERTIFICATES	CE, RoHs
OPERATING VOLTAGE	Low voltage to 48V DC	LUMINAIRE HOUSING WITH BULLET MAGNET	Aluminium natural or black anodised Aluminium vanished white RAL9010
LIGHT BEAM ANGLE	10°/25°/50° freely swivelling on bullet magnet	ATTACHEMENTS [OPTIONAL]	Thread for screwing on honey comb mesh Thread for screwing on tapered
SERVICE LIFE	LED 50,000 hours at 70% of mean luminous flux	CONTROL INTERFACE	Static or digital dimmable converter, DALI
COLOUR TEMPERATURE	White 2,600/3,000/3,500/4,000 Kelvin	WEIGHT	0.08 kg
CRI	CRI > 90	LIGHTING CALCULATION	For EULUM data see www.ado-lights.com
NO. OF LEDS	1		



LIGHT SPREAD | LED-Luc



LED-LUC

Magnetic Mini Spot

Base/Start Set with Plug Driver

TECHNICAL SPECIFICATIONS

General technical specifications see page 23



DIMENSIONS [W X H]

28 x 50 mm

LUMINAIRE HOUSING WITH MAGNETIC BASE

Aluminium natural or black anodised
Aluminium vanished white RAL 9010

CONNECTOR

Plug driver with on/off switch
Mounting plate

ATTACHEMENTS [OPTIONAL]

Thread for screwing on honey comb mesh
Thread for screwing on tapered
Conductor 4-way distributor



LED-LUC

Housing with Magnetic Mini Spot

TECHNICAL SPECIFICATIONS

General technical specifications see page 23



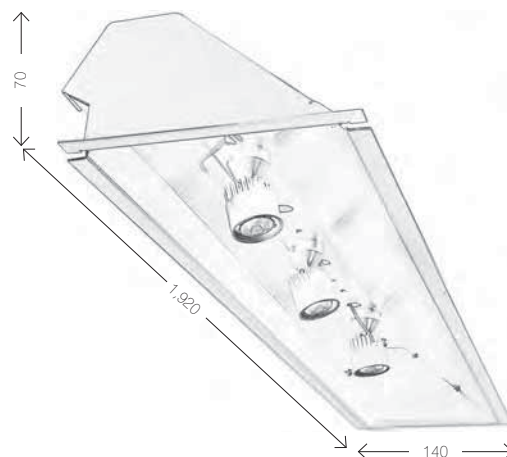
DIMENSIONS [L X W X H] 1.920 x 140 x 70 mm slanted
Other sizes upon request

NO. OF LEDS 1

**LUMINAIRE HOUSING
WITH MAGNETIC BASE** MINI SPOT:
Aluminium natural or black anodised
Aluminium vanished white RAL 9010

HOUSING:
Steel powder-coated white RAL 9010
Steel powder-coated black RAL 9005

**ATTACHEMENTS
[OPTIONAL]** Thread for screwing on honey comb mesh
Thread for screwing on tapered
End caps
Spring clips for ceiling installation



LED-LUC

Ceiling Track with Magnetic Mini Spots

TECHNICAL SPECIFICATIONS

General technical specifications see page 23



DIMENSIONS [L X W X H]

1,250/1,750/2,250 x 90 x 38 mm
Other sizes upon request

POWER CONSUMPTION

12/21/42 W dimmable | 1–10 V/push dim

NO. OF LEDS

4/7/12

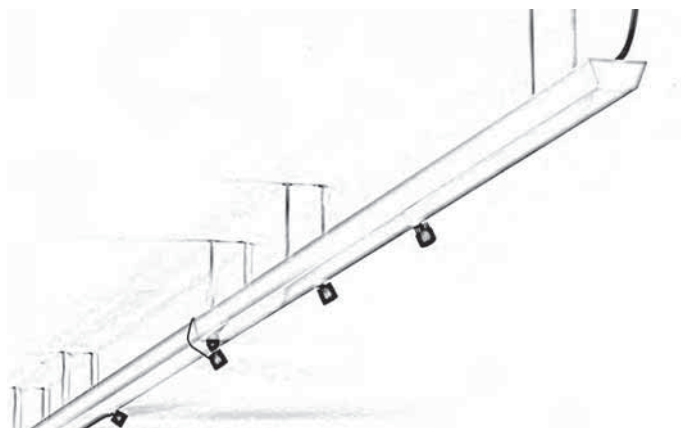
LUMINAIRE HOUSING WITH MAGNETIC BASE

MINI SPOT:
Aluminium natural or black anodised
Aluminium vanished white RAL 9010

TRACK WITH OUTLET COVER AND
CEILING FIXTURE 150 MM:
Steel powder-coated white RAL 9010
Steel powder-coated silver RAL 9006
Steel powder-coated black RAL 9005

SUPPLIES (OPTIONAL)

Suspending brackets, adjustable:
150–180 mm
Thread for screwing on honey comb mesh
Thread for screwing on tapered



LED-LUC

Column with Magnetic Mini Spots

TECHNICAL SPECIFICATIONS

General technical specifications see page 23



DIMENSIONS [H]

1,200/2,000 mm; base ø 300 mm
Other sizes upon request

POWER CONSUMPTION

3/6 x 1-3 W [1,200/2,000 mm]

NO. OF LEDS

3/6 [1,200/2,000 mm]

LUMINAIRE HOUSING WITH MAGNETIC BASE

MINI SPOT:
Aluminium natural or black anodised
Aluminium varnished white RAL 9010

COLUMN:
Aluminium natural or black anodised
Aluminium varnished white RAL 9010

ATTACHEMENTS [OPTIONAL]

Thread for screwing on honey comb mesh
Thread for screwing on tapered



LED-LUC

Standard Luminaire with Magnetic Mini Spots

TECHNICAL SPECIFICATIONS

General technical specifications see page 23



DIMENSIONS [H]

1,400 mm; base 285 x 285 mm
Other sizes upon request

POWER CONSUMPTION

3 x 1-3 W

NO. OF LEDS

3

LUMINAIRE HOUSING WITH MAGNETIC BASE

MINI SPOT:
Aluminium natural or black anodised
Aluminium varnished white RAL 9010

STANDARD LUMINAIRE:
Steel black
Steel white
Steel powder-coated rusty look

ATTACHEMENTS [OPTIONAL]

Thread for screwing on honey comb mesh
Thread for screwing on tapered



LED-LUC

V-Box with Magnetic Mini Spots

TECHNICAL SPECIFICATIONS

General technical specifications see page 23



DIMENSIONS [L X W X H] 250 x 150 x 100 mm
Other sizes upon request

POWER CONSUMPTION 3 x 1-3W

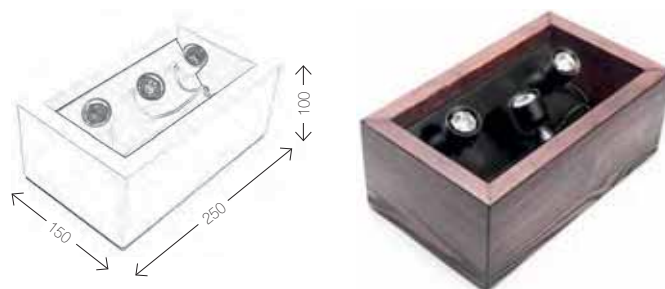
NO. OF LEDS 3

**LUMINAIRE HOUSING
WITH MAGNETIC BASE** MINI SPOT:
Aluminium black anodised

TRAY + REAR COVER:
Steel powder-coated black RAL 9005

BOX:
Oak oiled natural
Oak stained black
Beech varnished white or black
Beech used look white or black
Beech high-gloss varnished red

**ATTACHEMENTS
[OPTIONAL]** Thread for screwing on honey comb mesh
Thread for screwing on tapered



LED-LUC

Cube with Magnetic Mini Spots

TECHNICAL SPECIFICATIONS

General technical specifications see page 23



DIMENSIONS [L X W X H] 85 x 85 x 85 mm

NO. OF LEDS 1

LUMINAIRE HOUSING WITH MAGNETIC BASE

MINI SPOT:
Aluminium natural or black anodised
Aluminium varnished white RAL 9010

CUBE:
Oak oiled natural
Oak stained black
Beech varnished white or black
Beech used look white or black
Beech high-gloss varnished red

ATTACHEMENTS [OPTIONAL]

Thread for screwing on honey comb mesh
Thread for screwing on tapered

